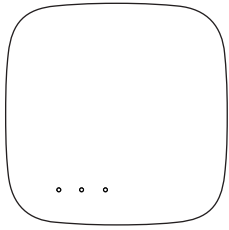


Instruction Manual Wired Smart Gateway

Wi-Fi 2.4GHz & ZigBee 3.0 & BLE & Mesh



English



1

③Function Button:

Short press for 1 time	Allows subdevices to be added to the gateway
Short press for 2 times (less than 2s)	Switch the arm and disarm mode
Long press for more than 5s	Gateway Reset

④Reset Button:

Long press the reset button for 5s	Factory reset and wipe the data of the hub and its subdevices.
------------------------------------	--

Preparation For Use

① Mobile phone is connected to 2.4GHz Wi-Fi



② Download and open the App

In the App Store, search for the relevant App or scan the QR code on the package/manual to download. If you are downloading the App for the first time, please tap "Register" to register your account. If you already have an account, please click the "Login" button.

5

SERVICE

- During the free warranty period, if the product breaks down during normal use, we will offer free maintenance for the product.
- Natural disasters/man-made equipment failures, disassembly and repair without the permission of our company, no warranty card, products beyond the free warranty period, etc., are not within the scope of free warranty.
- Any commitment (oral or written) made by the third party (including the dealer/service provider) to the user beyond the warranty scope shall be executed by the third party.
- Please keep this warranty card to ensure your rights.
- Our company may update or change the products without notice. Please refer to the official website.

RECYCLING INFORMATION

All products marked with the symbol for separate collection of waste electrical and electronic equipment (WEEE Directive 2012/19 / EU) must be disposed of separately from unsorted municipal waste. To protect your health and the environment, this equipment must be disposed of at designated collection points for electrical and electronic equipment designated by the government or local authorities. Correct disposal and recycling will help prevent potential negative consequences for the environment and human health. To find out where these collection points are and how they work, contact the installer or your local authority.



9



- Bitte scannen Sie den QR-Code, um das deutsche Handbuch, das Installationsvideo und die Funktionseinführung zu erhalten
- Escanee el código QR para obtener el manual en español, el video de instalación y la introducción de la función
- Veuillez scanner le code QR pour obtenir le manuel en français, la vidéo d'installation et l'introduction des fonctions
- Отсканируйте QR-код, чтобы получить руководство на русском языке, видео по установке и описание функций
- Leia o código QR para obter o manual em português, o vídeo de instalação e a introdução das funções



请扫描二维码获取中文说明书、安装视频及功能介绍

English

2

Add Devices

- Connect the gateway to the power supply and connect it to the home 2.4GHz band router through the cable;
- The red and blue indicators are steady on for the first time, waiting 1 minute until the blue indicator blinks (if not you need to long press the function button until you hear the prompt "please release" for the blue indicator blinks.
- Make sure Bluetooth switch of the mobile is on, and mobile is connected to the 2.4 GHz WiFi of home router;
- Open the APP, will find gateway automatically, then click "Add", if don't find gateway, then click the button "+" in the upper right corner of the screen, select "Gateway Control" in the left menu bar on screen, and choose "Multi-mode Gateway", press function button until LED indicator blinks, operate according to App directions;



English

6

WARRANTY CARD

Product Information

Product Name _____
 Product Type _____
 Purchase date _____
 Warranty Period _____
 Dealer Information _____
 Customer's Name _____
 Customer Phone _____
 Customer Address _____

Maintenance Records

Failure date	Cause Of Issue	Fault Content	Principal

English

10

Product Specifications

Product name	Wired Smart Gateway
Electrical Parameters	5V 1A
Operating temperature	-10℃~45℃
Operating humidity	5%~90% RH(no condensation)
Wired Protocol	Wi-Fi 2.4GHz & ZigBee & BLE & Mesh
Product Size	95*95*22 mm

Packing list

- Wired Smart Gateway
- Instruction manual x 1
- Power cable x 1
- Adapter x 1 (optional)
- Network cable x 1

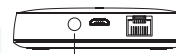
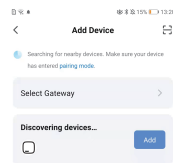
Product Description

The smart gateway is the control center of the ZigBee and Bluetooth device. Users can design and implement smart application scenarios by adding ZigBee and Bluetooth devices

3

English

Add Device



Reset Network Button

Add Manually



- Once the device has been added successfully, you will be able to find the device on the "My Home" page.

7

English

Thank you for your support and purchase at we Moes, we are always here for your complete satisfaction, just feel free to share your great shopping experience with us.



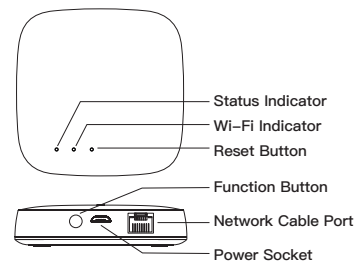
If you have any other need, please do not hesitate to contact us first, we will try to meet your demand.

FOLLOW US

- @moessmart
- MOES.Official
- @moes_smart
- @moes_smart
- @moes_smart
- www.moeshouse.com

11

English



①WiFi Indicator(Blue): Configuration Status:

Blinks(0.5s)	Ready for connection
Blinks(1s)	Allows subdevices to be added to the gateway
Steady Off	Activated

②Status Indicator(Red):

Blinks	Delay into guard mode or the gateway is under alarm state
--------	---

English

4

Electronic Information Products Toxic And hazardous substance Declaration

Part name	Toxic or harmful substances or elements				
	Lead Pb	Mercury Hg	Cadmium Cd	Hexavalent chromium Cr(VI)	Polybrominated biphenyl PBB
PCB board	○	○	○	○	○
Housing	○	○	○	○	○
Cable	○	○	○	○	○

O: Indicates that the content of this toxic and hazardous substance in all homogeneous materials of this part is below the maximum limit specified in SJ/T1163-2006 Requirements for Concentration Limits for Certain Hazardous Substances in Electronic Information Products;

X: Indicates that the toxic or hazardous substance contained in at least one of the homogeneous materials of the part exceeds the maximum limit specified in the SJ/T1163-2006 standard

10 The figures in this label indicate that the product has an environmental protection use period of 10 years under conditions of normal use, and some parts may also have an environmentally friendly use period mark. The environmental protection use period is based on the number indicated by the mark.

English

8



WENZHOU NOVA NEW ENERGY CO.,LTD

Address: Power Science and Technology
 Innovation Center, NO.238, Wei 11 Road,
 Yueqing Economic Development Zone,
 Yueqing, Zhejiang, China
 Tel:+86-577-57186815
 Email:service@moeshouse.com



AMZLAB GmbH
 Laubenhof 23, 45326 Essen
 Made in China

English

12